

METRO NORTH TRANSMISSION STUDY

Village of Anmore

September 30, 2014

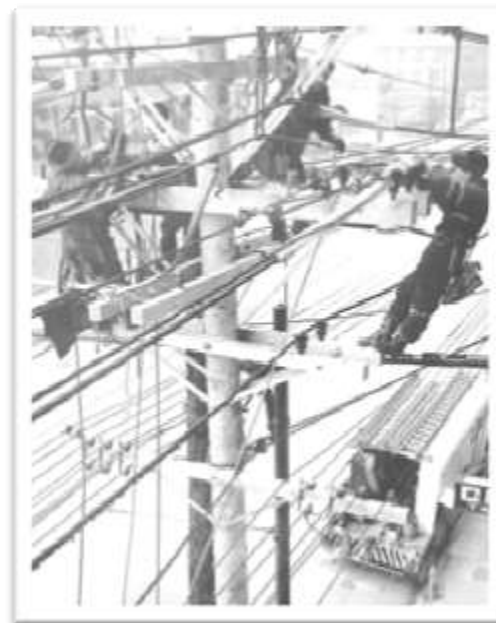


FOR GENERATIONS

BC HYDRO

Wholly-owned by the province of B.C.

- Established in 1962
- Regulated by the British Columbia Utilities Commission
- 1.9 million customer accounts
 - Equivalent to Washington, Oregon and California combined
 - Dense urban centers and widely dispersed rural communities



BC HYDRO SYSTEM

Generating Electricity

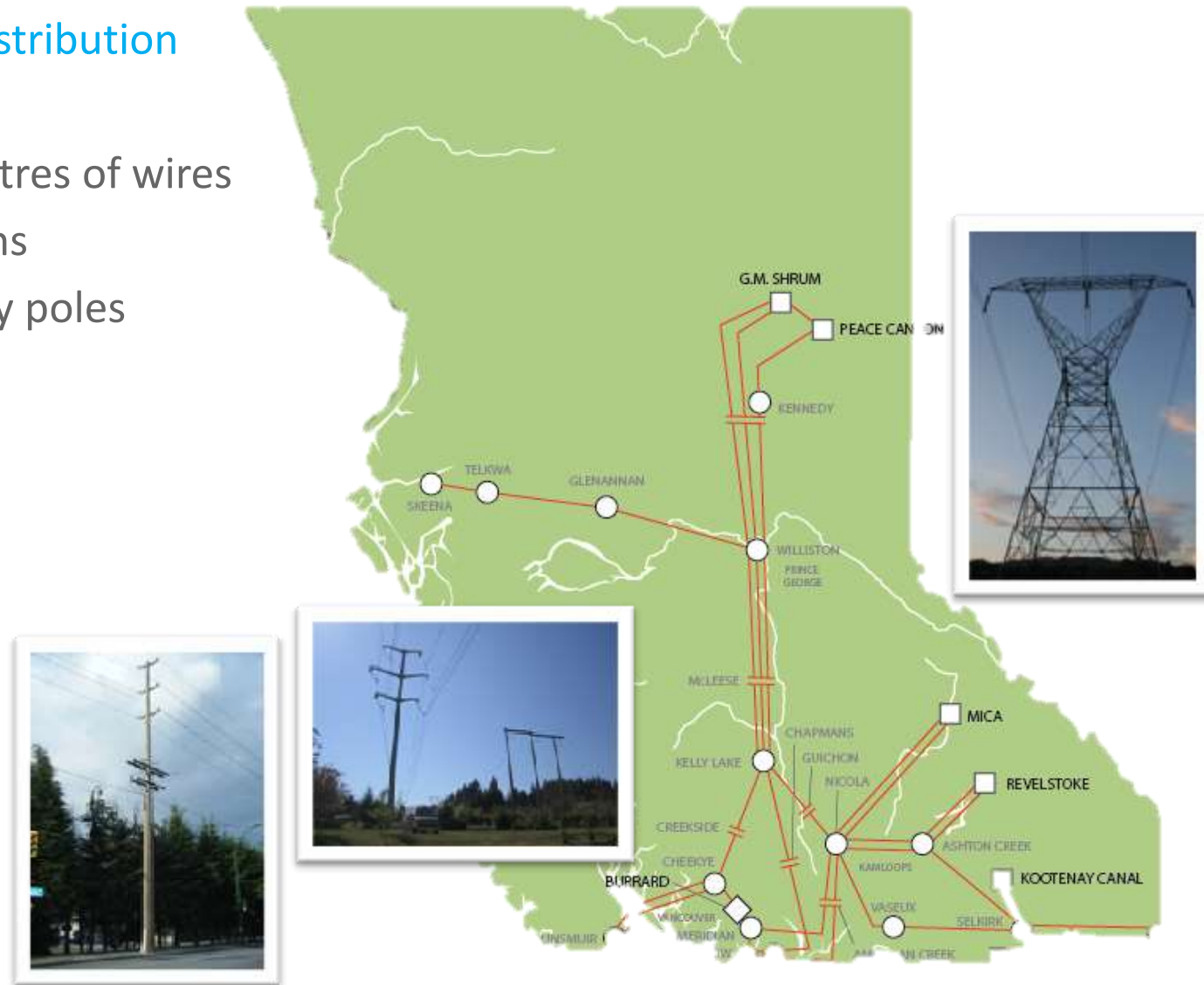
- 31 hydro facilities
- 12,000 MW generating capacity
- 48,000 GWh of energy
- 75% of the load consumed in Lower Mainland, Fraser Valley and Vancouver Island



BC HYDRO SYSTEM

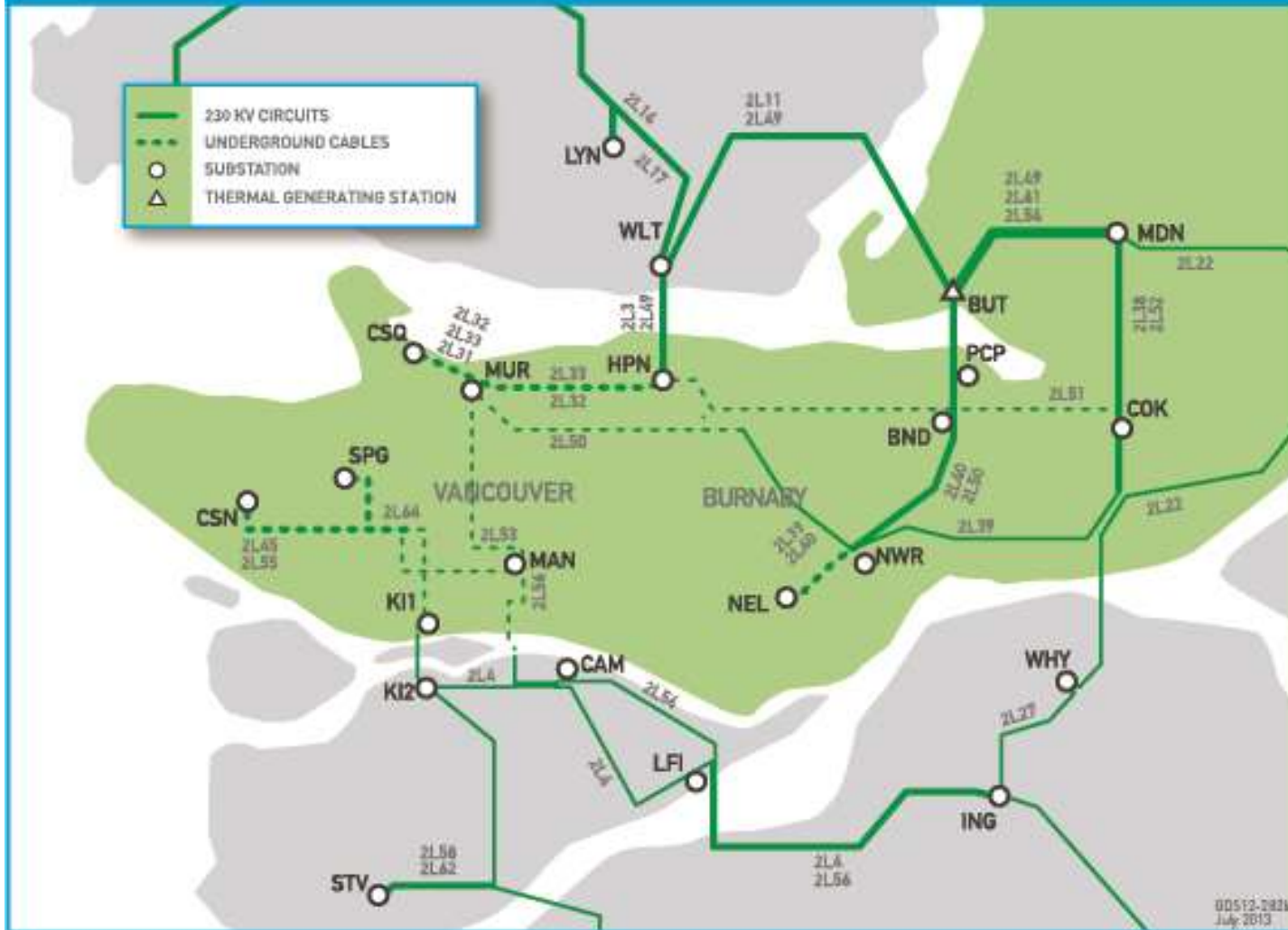
Transmission & Distribution

- 76,000 kilometres of wires
- 300 substations
- 1 million utility poles



METRO NORTH TRANSMISSION STUDY

METRO VANCOUVER - 230 KV SYSTEM



Why is this study taking place?

Demand for electricity in Metro Vancouver growing

Considerations:

- Need to transport additional power coming into regional grid
- Existing circuits are reaching capacity
- Ensure reliability in the case a circuit is out of service
- The underground circuit with the largest capacity is not in good condition



The MNT Study is part of the 30-year Metro Vancouver Strategic Supply Plan to improve system security and meet load growth in the Metro Vancouver area

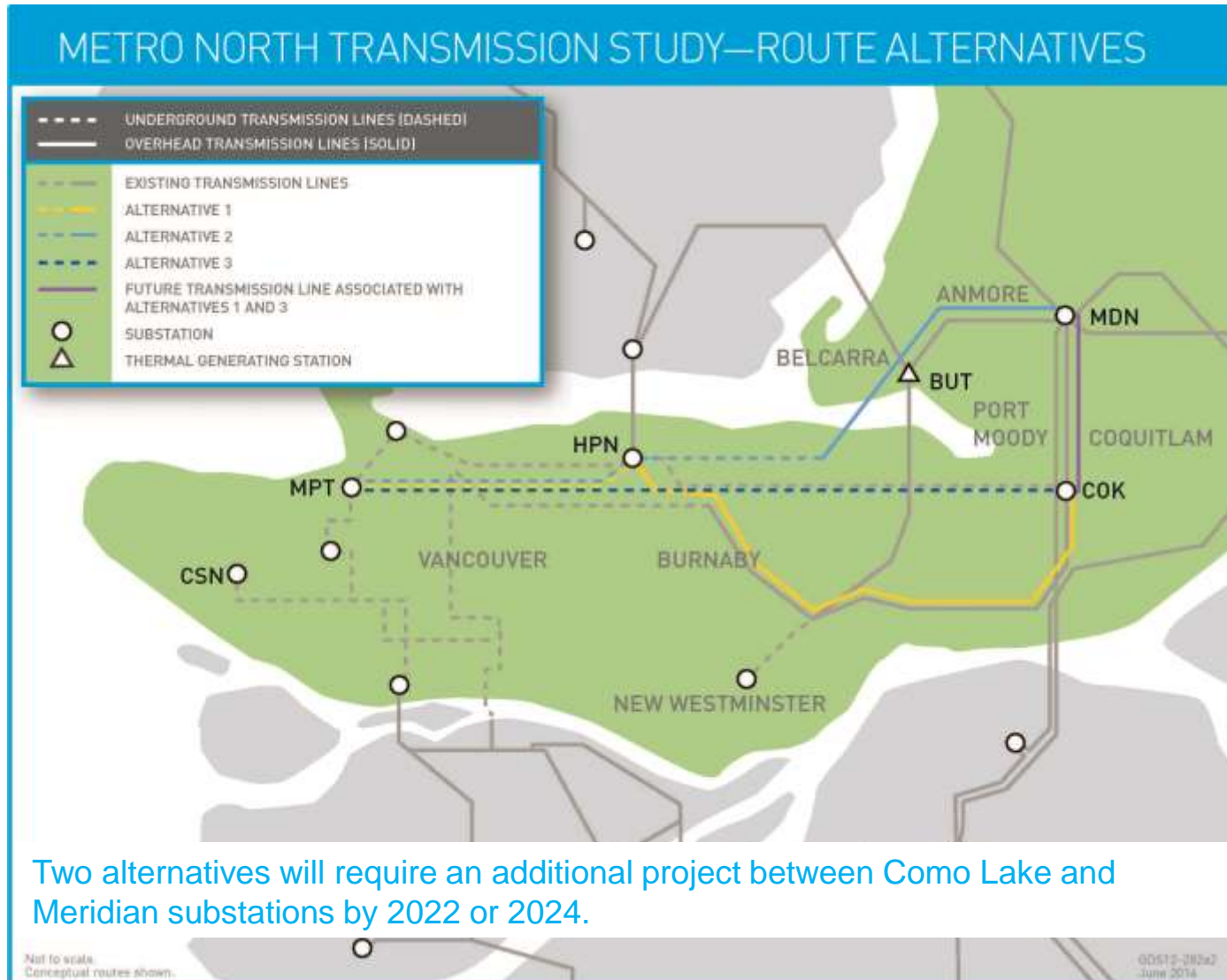
What is the proposed solution?

230 kV transmission line(s) between Coquitlam and Vancouver by 2019

- Three alternatives for line routing
- Overhead and/or underground components
- Use existing rights-of-way and/or road corridors wherever possible
- Modifications to existing substations



Study area



Study activities

- Evaluate short and long term system requirements
- Review property rights along overhead transmission corridors
- Complete desktop geotechnical feasibility studies on alternative routing
- Conduct environmental and archeological overview assessments of alternative routing
- Consult with governments, utilities, pipeline companies, community groups and the public
- Consult with 20 First Nations including umbrella organizations

Seeking Anmore's feedback

- Four open houses held in Coquitlam, Vancouver, Port Moody, Burnaby
- Meetings/presentations to staff, mayor and council
- Meetings with local environmental groups and Metro Vancouver Parks
- Alternative 2 feedback focused on property value impacts, health concerns, tree removal, stream impacts including potential crossing of Burrard Inlet



Structured Decision Making

- Consider alternatives from financial, system reliability, safety, constructability, environmental, stakeholder, First Nation, property, and regulatory aspects
- Develop decision objectives that help differentiate amongst the three alternatives and to determine a leading alternative

Proposed schedule

Tasks	Date
Study phase community open houses	Complete
Select a leading alternative	Fall 2014
Proceed to project definition phase	Fall/Winter 2014

